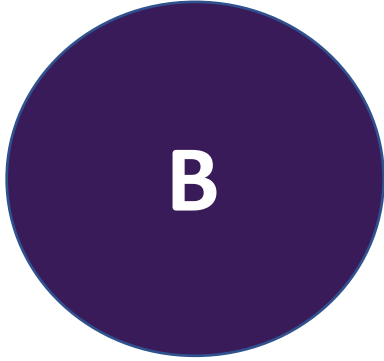


Facility Organization Options

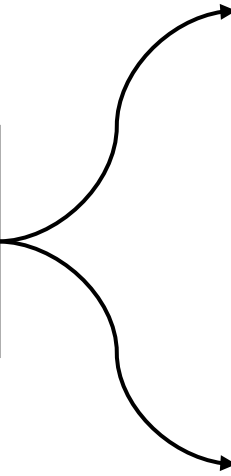
Clubs, Industrial Arts Campus & Fitness

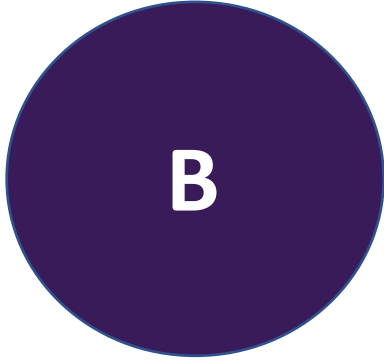
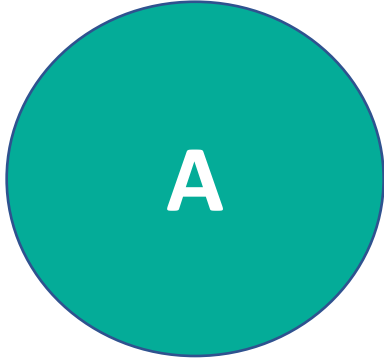


GVR Glass Artists Club

**Industrial Arts Campus
@
West Center**

Clubhouse Lower Level





**GVR Lapidary &
Silversmith Club**

**Consolidate @
Industrial Arts Campus
@
West Center**

**No consolidation of 3
shops**

**Industrial Arts Campus
@ West Center**

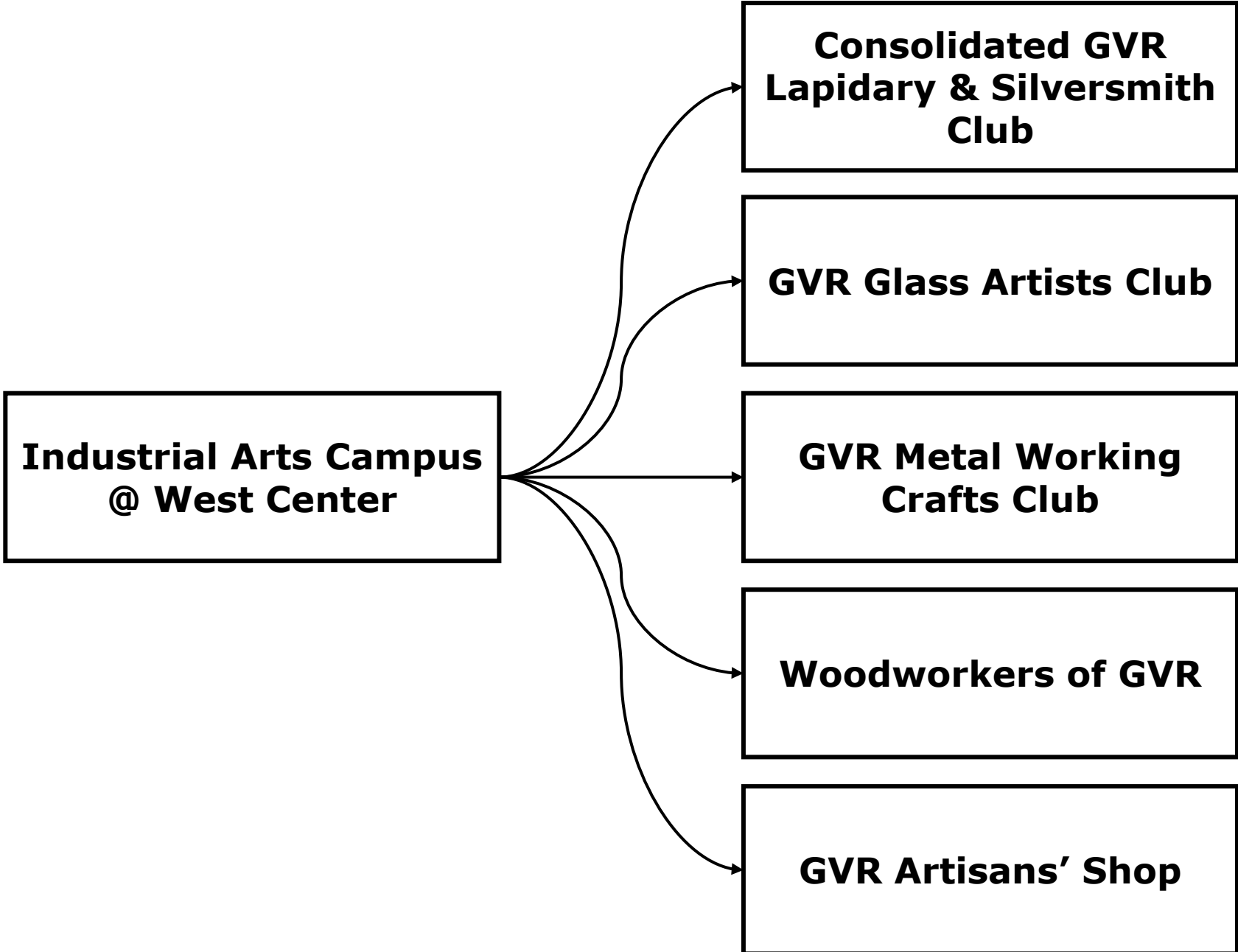
**Consolidated GVR
Lapidary & Silversmith
Club**

GVR Glass Artists Club

**GVR Metal Working
Crafts Club**

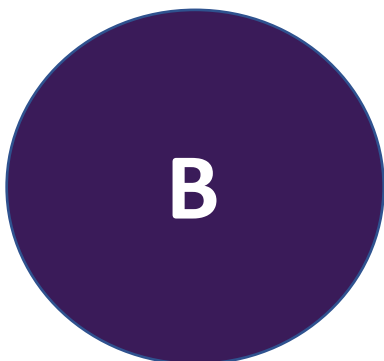
Woodworkers of GVR

GVR Artisans' Shop



GVR Industrial Arts Campus



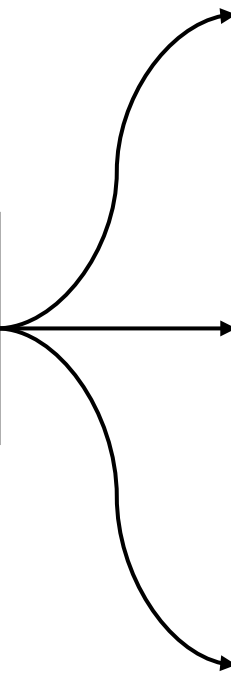


Ceramics Club of GVR

**Fine Arts Campus @
Santa Rita Springs**

**Expand into former
Lapidary & Arts
Classrooms**

**Upper Level @
Clubhouse**



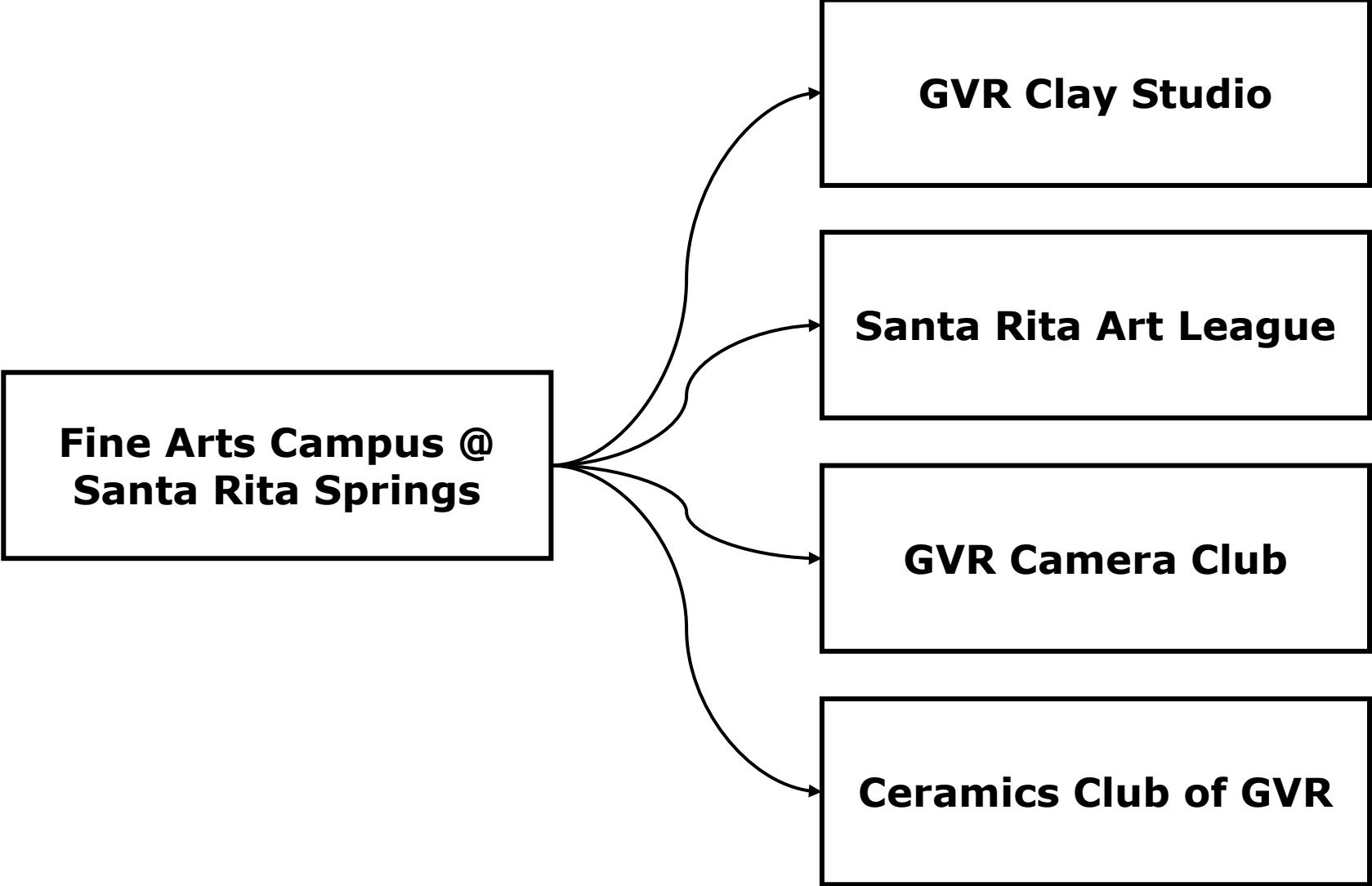
Fine Arts Campus at Santa Rita Springs

Potential use or repurposing of currently underutilized space at Santa Rita Springs to allow for the expansion and relocation of existing fine arts clubs.

GVR Corporate Policy Manual

SECTION VIII – GVR PROGRAMS/CLUBS Section VIII: SUBSECTION 2. F.
Facilities

3. Clubs that don't routinely utilize at least 50% of their dedicated space may be reassigned to a more appropriate sized facility.



Fitness Center and Studio



**Desert Hills
Shuffleboard and
Billiards**

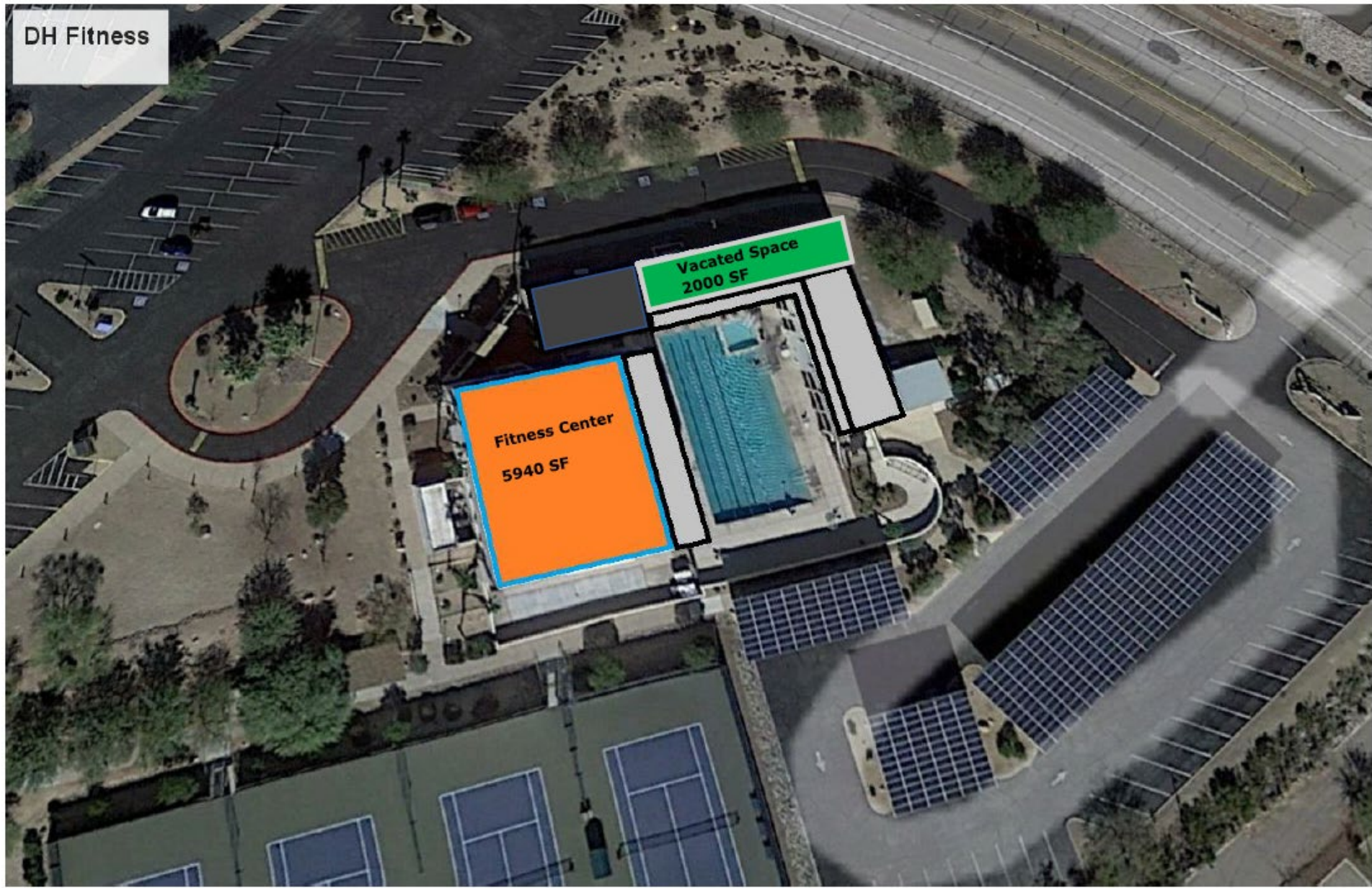


**Billiards to current DH
Fitness and Room C or
CHCH Lower Level**



**Repurpose Canoa Hills
Fitness Room**

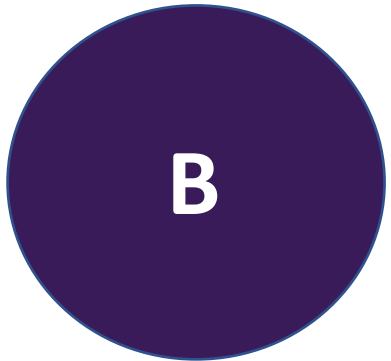
Desert Hills Fitness & Billiards



DH Fitness

Fitness Center
5940 SF

Vacated Space
2000 SF



Social Gathering Space

**Upper Level @
Clubhouse**

**Clubhouse Lower Level
Billiards & Game
Rooms**

**West Center Courtyard
& Artisans' Shop**

**Relocate Artisans' to
Lobby @ WC**

